

# Manual and safety instructions

## TOSIZE Furniture cabinets

v. 01-03-2024

### Table of contents

- SAFETY.....2**
  - REQUIRED..... 2
  - TIPS..... 2
- ASSEMBLY KIT CONTENTS.....3**
  - Required tools (not included)..... 4
- MONTAGE.....5**
  - Instruction video's..... 5
  - Construction.....5
    - Different depth - mounting TV..... 7
    - Doors.....7
    - Shelves..... 8
    - Adjusting doors..... 8

# SAFETY



## Warning

If a piece of furniture falls over, serious or even life-threatening injuries can occur. The furniture should therefore always be permanently fixed to the wall. As every wall is different, no wall fixing material is included. Use suitable wall fittings to secure the furniture. Get information from a specialist.





## REQUIRED



1. Always provide all compartments with the supplied back panels
2. Always use all dowels and dowel holes to create a stable construction
3. Always use supplied wood glue to join the panels
4. Ensure that the lower beams are always levelled
5. Always mount the cabinet against a wall with the enclosed reinforcement angles (fixing material for the wall not included)
6. Avoid sagging. Never place more than 5 kg per beam section.

## TIPS

- Take fun photos of the process and result; we love to inspire others with these images!
- Always work with 2 people
- Sort all parts in order. Use the supplied blanket to protect parts and floor. See also the construction drawing.
  - Girders sorted in order (assembly to start with number 1)
  - Uprights sorted in order (assembly starting with letter A)
  - Rear panels sorted in order (assembly to start with A1)
  - Doors sorted in order (assembly to start with D1)
  - Shelves (from left to right and from bottom to top, starting with L1)
- Follow the work drawing and work from left to right, building the cabinet layer by layer
- Always build the cabinet in its final location. The made-to-measure cabinet is not suitable for moving.
- Are you sure about how to build the cabinet? Then place a thin line of glue on the areas between the drill holes before placing the shelves on top of each other. Don't use too much and remove any glue residue immediately. Using a soft hammer, gently but firmly tap the parts together.
- Press the parts gently but firmly. Avoid breaking out!

# ASSEMBLY KIT CONTENTS

Item	Number	Application	Image
Moving blanket	1 piece	Protect your cabinet parts and floor from scratches or damage.	
Levelling feet	4 per girder	To level the cabinet. To be used in the lower beams.	
Hex key	1 piece	To adjust the levelling feet.	
Screws size 3x16	2 per levelling leg	For securing the levelling legs.	
	2 per door	For securing push-to-open pins.	
Screws size 4x40	2 per reinforcement angle	For attaching the mounting angle to the cabinet (provide your own fixing material to attach the cabinet to the wall).	
Hinges	At least 2 per door	To fix in the doors. Note: it is a clamping system, no screws are needed!	
Mounting plates	1 per hinge	To fix in the cabinet and mount the hinge on.	
Shelf supports	4 pieces per shelf	To push into the row bore and put the shelf on.	

Item	Number	Application	Image
Push-to-open pins	1 set per door	Consists of 3 parts. To mount in the cabinet and open the door handle-free.	
Wood glue	1 jar	To connect panels.	
Reinforcement angle	1 per vertical casing section	To attach the cabinet to the wall.	



### Required tools (not included)

Tools	Application
Spirit level	For setting the lower beams
(cordless) Drill	For screwing on the levelling feet and wall brackets
Phillips screwdriver	To adjust the doors if necessary (do not use a cordless drill for this)
Rubber hammer	For knocking the beams firmly onto the uprights
Sturdy stairs	To place any higher parts

# MONTAGE

We like it when you take photos of the process and the result! 😊

## Instruction video's

	
General instruction video	Separate instructional videos

## Construction

*Important: Remove the stickers only after the cabinet is fully assembled.*

*Important: Are you still going to paint your cabinet? Then do this after the cabinet has been assembled. This way, you can first smooth out any unevenness with sealant and/or putty and finish the cabinet neatly. Mounting the hardware (hinges and push-to-open pins) is best done after painting.*

Work row by row.

Row 1: Place beams → place uprights → place back walls.

Row 2: Place beams → place uprights → place back walls.

Row 3: etc.

1. Start with beam 1. Turn upside down, insert the 4 levelling feet and attach the feet with the screws. Do the same with the other lower beams. Scan the QR code on page 5 to watch a short video of this.
2. Place all lower beams in the right place. Use the hex key and the spirit level to level all lower beams. Scan the QR code at the bottom of the page to watch a short video of this.
3. Place the dowels in all the drill holes of the uprights.

4. Take upright 'A' and insert it (carefully) into the beams' drill holes. Are you sure it is seated correctly? The parts only fit together one way. The labels are on the left at the uprights and at the top of the beams.
5. Oval-shaped holes have been drilled on the beams. These serve to allow the uprights to be adjusted a little more and fit neatly at the front.
6. Then carefully loosen the upright and place a small line of glue on the underside of the upright so that it is secured to the beam.
7. Do the same with upright 'B' and continue until the bottom layer is ready.
8. Always make sure you tap the boards well with a soft hammer. This will prevent gaps.
9. Now place the rear wall 'A1'. This comes between beam 1, upright 'A' and upright 'B'.
10. Make sure dowels are in all holes of the back wall. Don't exclude any back walls, this will weaken the construction.
11. Do the same with back wall 'A2' and continue until the bottom layer is ready.
12. Repeat these steps (place beams → place uprights → place back walls) until you get to the top layer.
13. Place the final beams on top of the uprights and back wall.
14. The cabinet is now set up. Ready for permanent fixing to the wall with supplied reinforcement angles. Use 1 piece per vertical cupboard section (wall fixing material not included).

## Different depth - mounting TV

Did you choose a different depth for one of the compartments in the cabinet? Then you may want to hang your TV. A 70 x 50 cm plywood panel has been added to mount your TV to. Plywood is better suited for screwing than MDF or chipboard. You can glue this panel behind the back wall in the right place and then screw the screws of the TV bracket through the back wall into the plywood. This way, we can be sure that the TV will hang safely for years to come!

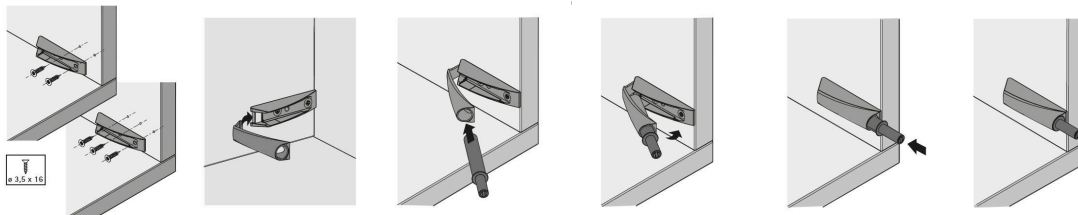
## Doors

*(do this after painting if necessary)*

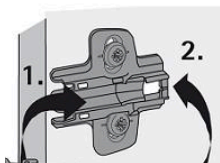
Scan the QR code with your mobile phone to watch the explanation in a video!

### 1. Fitting the push-to-open pins:

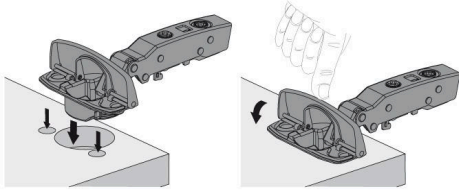
- Screw the mounting plate with the convex side facing backwards.
- Now snap the cover from back to front onto the bottom plate.
- Now push the cylinder (pin) all the way into the housing.
- The images below show the pin on the upright. We drill the holes on the upright. Usually at the top of a compartment, for tall doors at the bottom of the compartment.



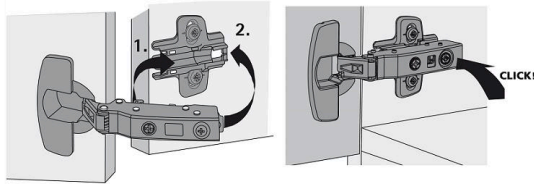
- ### 2. Screw the **mounting plates** onto the side-panels. Use the holes drilled just a little further forward than the holes for any shelves. The arrow on the mounting plate points to the front of the cabinet.



- ### 3. **Click** all hinges into the door(s) by inserting the hinge into the pre-drilled hole and clicking into place by pushing the cap down. This causes the hinge to clamp itself into the door. **NO screws are required for this!**



4. Click the hinges onto the mounting plates by inserting the front hinge into the hooks of the mounting plate and clicking the hinge onto the mounting plate by pushing on the back.

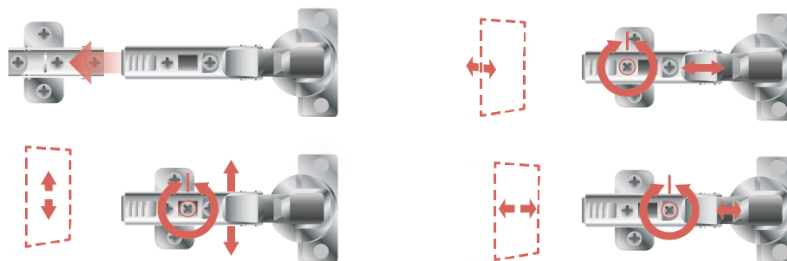


## Shelves

1. Insert the shelf supports (4 per shelf) into the holes
2. Place the shelf on the shelf supports
3. The shelves are numbered from left to right and from bottom to top with L1, L2, etc.

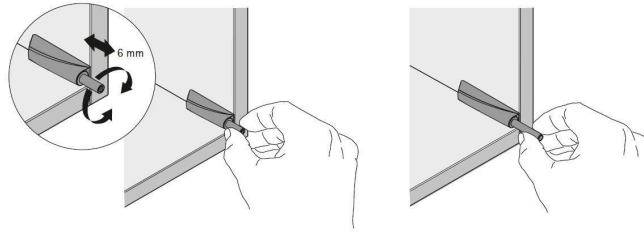
## Adjusting doors

- To hang the doors neatly straight, use the screws on the hinges. There are two adjusting screws on the hinge itself: to adjust inwards and outwards and from left to right. The adjusting screw on the mounting plate is to adjust the door higher or lower. Always use a manual screwdriver for adjusting doors.





- You can turn the push-to-open pin. This closes the door further inwards or outwards. You can also try this when the push-to-open system does not work properly. The pin is then given more or less space to push in and push out properly.



**Your cabinet is now all ready and can be decorated. Have fun with it!**